



Message from the Head

Dear Parents/Carers,

A huge thank you to our amazing PTA for all the hard work and dedication that went into making the Winter Fair such a success. It was wonderful to see so many families there, and we look forward to sharing our plans for future playground development with you soon.

Thank you also to Include Choir for involving our school in your paper chain making project. If you're out shopping at the Belfry this weekend, don't forget to keep an eye out for them!

Have a lovely weekend everyone,
Moirá

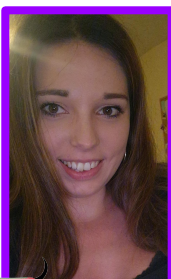
[Click here to book the Walking Bus](#)

Attendance

- A reminder that holidays are not authorised in term time and in some cases may incur a penalty from Surrey County Council. Please [click here](#) to watch Miss Payne's useful guide to the new attendance regulations.
- We understand that at times children need to stay at home if they are unwell, however, we do have a duty to keep you informed of your child's attendance and you may receive a letter letting you know if it falls below our school target.
- If your child has a medical appointment, please provide evidence of this by bringing the appointment letter in to the school office for us to copy or by sending it to; attendance@hatchlandsprimary.co.uk

Welcome to our new Staff Member

My name is Miss Mountford and I am looking forward to joining Hatchlands as a Learning Support Assistant. In my spare time, I enjoy watching Disney films with my two boys. I also enjoy dance and I have a sausage dog called Cookie!



Christmas Performances



The children are practicing hard for the Christmas performances and are sounding wonderful already!

Key stage One and Two families will be able to reserve 2 tickets for each performance, these will be available to order in the Arbor School Shop from **Monday 2nd December at 5.00pm**

Your tickets will be issued shortly to you before the performances, check the **dates for diary** for times and dates,

Reception families do not need to request tickets, extended family are welcome to join us.

We look forward to celebrating with you soon!

Class	Week Beg 18/11	Week beg 25/11
Bumblebees	93%	98%
Ladybirds	93%	97%
Hedgehogs	94%	83%
Robins	92%	90%
Kingfishers	88%	67%
Squirrels	94%	96%
Otters	93%	92%
Skylarks	92%	91%
Hares	98%	95%
Woodpeckers	95%	98%
Foxes	88%	92%
Swans	98%	99%
Owls	94%	90%

Well done to Swans for topping the table!



[hatchlandsschool](https://www.instagram.com/hatchlandsschool)



[@HatchlandsPrimarySchool](https://www.facebook.com/HatchlandsPrimarySchool)



[@hatchlandssch](https://www.twitter.com/hatchlandssch)

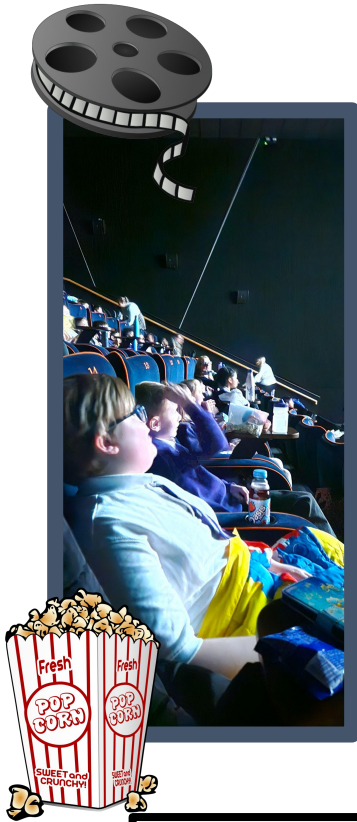
Compassion

Responsibility

Courage

Respect

Cinema Trips



Thank you to Miss Salter for organising our brilliant trips to the cinema. The children had a fantastic time and so did the staff!

Thank You!



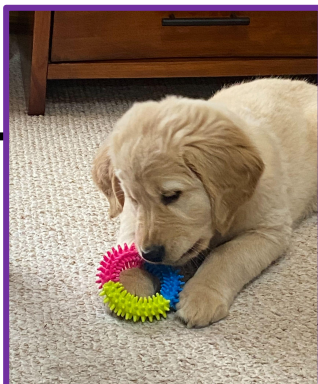
Update on Guide Dog - Laika

You may remember that we let you know earlier in the term that one of our families is hosting a Guide Dog puppy, they have kindly send us an update on her progress! It's very exciting to see her around school but please remember to give her lots of space, she has an important job to do"

"We are introducing our newest family member, Laika. She is a 9 weeks old trainee Guide Dog, a mix of Labrador and Golden Retriever. She's got a lovely gentle and playful nature, loves cuddles and discovering the world around her.

I know she would like to meet everyone at Hatchlands, but not at once to avoid overwhelming her please!

We will keep you posted about Laika's progress and adventures."









SANTA STORK COLLECTION

WE ARE COLLECTING DONATIONS OF THE FOLLOWING BRAND NEW ITEMS...

- Christmas themed chocolate (no nuts)
- Books
- Baby toys e.g. bath/sorting/stacking/musical (no batteries)
- Baby blankets and comforters
- Fidget toys
- Lego/Duplo/Megablox sets
- Dolls and Action figures e.g. superheros
- Play-Doh and arts/crafts sets
- Stationery giftsets/notebook and pen sets
- Fleece blankets and wearable blankets (all ages)
- Teenage toiletry gifts sets



OUR COLLECTION FOR STRIPEY STORK

When: BY 5TH DEC

Where: ELLIS SCOTT




YMCA EAST SURREY

SANTA RUN

Sunday 15 December 2024
Priory Park, Reigate

- ▶ 10:30 | Adult 3 mile (aged 16+)
- ▶ 11:15 | Family 1 mile (children aged 4+ and adults)



Register online at: www.ymcaeast Surrey.org.uk

f X Instagram YMCAEastSurrey



Here for young people
Here for communities
Here for you

Registered charity no. 1075028







Creating connections. Changing lives.



Join our Christmas Challenge to raise £36,000 in one week!
Every £1 donated between noon on 3rd and noon on 10th December is **doubled**!
If you donate £5 include.org is given £10 via The Big Give!



December

3

➔


December

10

Scan to donate


Or visit include.org/donate

➔

Scan to donate

or visit include.org/donate



include.org

The Include Project: Reg. Charity no: 1177785



Please Join Us
Christmas PERFORMANCE

Reception Nativity
Mon 9th Dec at 2.30pm OR Tues 10th Dec at 9.15am

Years 1, 2 and 3 Christmas Show
Weds 11th Dec at 2.30pm OR Thurs 12th Dec at 9.15am

Years 4, 5 and 6 Christmas Show
Weds 18th Dec at 9.15am OR Thurs 19th Dec 2.30pm

2 adults per performance
Please book on Arbor

Christmas Craft Sale

PLEASE JOIN THE YEAR 6 PUPILS AS THEY RUN THEIR FIRST FUNDRAISER AFTER THE CHRISTMAS PERFORMANCES

RECEPTION: 09.12.24 - 2.30PM
RECEPTION: 10.12.24 - 9.15AM
YRS 1/2/3: 11.12.24 - 2.30PM
YRS 1/2/3: 12.12.24 - 9.15AM
YRS 4/5/6: 18.12.24 - 9.15AM
YRS 4/5/6: 19.12.24 - 2.30PM

(PERFORMANCE START TIMES ABOVE)
ALL PROCEEDS GO TOWARDS THE YEAR 6 LEAVERS PROM

How Nurturing Programme Parent Groups have helped other parents

"I am a much more confident, positive and understanding parent.
I feel much more able to cope now."

"We are having less family arguments and the household is a lot calmer."

"The group was fun. It's the only two hours I have for myself each week."

"The atmosphere was really relaxed. No-one judged anyone and everyone was listened to and respected."



Check out familylinks.org.uk for more information on The Parenting Puzzle book and the Nurturing Programme

The 10-week Nurturing Programme for parents and carers

Where:
Home-Start Community Room
Tower House (2nd Floor)
3, Cromwell Road
Redhill
RH1 1RT

When:
Mondays 7.30pm to 9.30pm

13th/20th/27th January 25
3rd/10th/24th February 25
3rd/10th/17th/24th March 25

contact details:

Please contact Lisa to book a place
email lisa@home-starteastsurrey.org.uk
mob: 07593 503701

cost: £30 per person or £50 per couple

FAMILY LINKS
The Centre for Emotional Health

The Nurturing Programme

Information for parents and carers

How to get the best out of family life



FAMILY LINKS
The Centre for Emotional Health

familylinks.org.uk
Registered charity 1062514



Dates for the diary




Date	What is happening?
02.12.24	Year 3 Stone Age Workshop
04.12.24	Year 4 Greek Workshop
04.12.24 @3.30pm	Year 6 SATs Meeting
05.12.24 @ 09.00am	Parent Forum Meeting
09.12.24	Year 6 WW2 Workshop
9.12.24 @ 2.30pm & 10.12.24 @ 9.15am	EYFS Nativity
11.12.24 @ 2.30pm & 12.12.24 @ 9.15am	Y1/2/3 Christmas Show
13.12.24	Christmas Dinner & Christmas Jumper Day
17.12.24	Year 5 Trip to Merstham Park
18.12.24@ 9.15am & 19.12.24 @ 2.30pm	*Year 4/5/6 Christmas Performance * <i>*Please note change of date</i>
19.12.24	Year 2 Great Fire of London Workshop
20.12.24	Autumn Term ends at normal time
06.01.25	INSET Day
07.01.25	Spring Term begins
21.01.25 @ 2.45pm	Woodpeckers Sharing Assembly
23.01.25 @2.45pm	Hares Sharing Assembly
04.02.25 @2.45pm	Otters Sharing Assembly
06.02.25 @ 2.45pm	Skylarks Sharing Assembly
11.02.25	Safer Internet Day
07.02.25 from 2.00pm	Family Friday
17.02 - 21.02.25	Half term week



